

RCBS®

CHARGEMASTER SUPREME



PRODUCT INSTRUCTIONS

#98943

WARNING! Before using this product, read and follow these instructions carefully. Failure to do so could result in serious injury or death, or property damage.



If you have any questions while assembling or operating this product, call us at 1-800-533-5000 (U.S. or Canada) or email us at rcbs.tech@vistaoutdoor.com

This manual contains important safety and operating information. Keep this as a permanent part of your reloading equipment. If lost, contact us for a replacement.



FCC Statement

This device complies with part 15 of the FCC Rules. Operation is subject to the following two conditions: (1) This device may not cause harmful interference, and (2) this device must accept any interference received, including interference that may cause undesired operation.

This equipment has been tested and found to comply with the limits for a Class B digital device, pursuant to Part 15 of the FCC Rules. These limits are designed to provide reasonable protection against harmful interference in a residential installation. This equipment generates, uses and can radiate radio frequency energy and, if not installed and used in accordance with the instructions, may cause harmful interference to radio communications. However, there is no guarantee that interference will not occur in a particular installation. If this equipment does cause harmful interference to radio or television reception, which can be determined by turning the equipment off and on, the user is encouraged to try to correct the interference by one or more of the following measures:

- Reorient or relocate the receiving antenna.
- Increase the separation between the equipment and receiver.
- Connect the equipment into an outlet on a circuit different from that to which the receiver is connected.
- Consult the dealer or an experienced radio/TV technician for help.

Shielded interface cable must be used with the equipment in order to comply with the limits for a digital device pursuant to Subpart B of Part 15 of FCC Rules. Specifications and designs are subject to change without any notice or obligation on the part of the manufacturer.

Industry Canada Statement :

This device complies with ISED's license-exempt RSSs. Operation is subject to the following two conditions: (1) This device may not cause harmful interference, and (2) this device must accept any interference received, including interference that may cause undesired operation.

Le présent appareil est conforme aux CNR d'ISED applicables aux appareils radio exempts de licence. L'exploitation est autorisée aux deux conditions suivantes: (1) le dispositif ne doit pas produire de brouillage préjudiciable, et (2) ce dispositif doit accepter tout brouillage reçu, y compris un brouillage susceptible de provoquer un fonctionnement indésirable.

Radiation Exposure Statement / Déclaration d'exposition aux radiations :

This device complies with the Industry Canada portable RF exposure limit set forth for an uncontrolled environment and is safe for the intended operation as described in this manual. Further RF exposure reduction can be achieved if the product can be kept as far as possible from the user's body or if the device is set to a lower output power if such function is available.

Le produit est conforme aux limites d'exposition pour les appareils portables RF pour les Etats-Unis et le Canada établies pour un environnement non contrôlé.

Le produit est sûr pour un fonctionnement tel que décrit dans ce manuel. La réduction aux expositions RF peut être augmentée si l'appareil peut être conservé aussi loin que possible du corps de l'utilisateur ou que le dispositif est réglé sur la puissance de sortie la plus faible si une telle fonction est disponible.

Disposal of Electric and Electronic Equipment

(Applicable in the EU and other European countries with separate collection systems)

This equipment contains electric and/or electronic parts and must therefore not be disposed of as normal household waste. Instead, it should be disposed at the respective collection points for recycling provided by the communities. For you, this is free of charge.

If the equipment contains exchangeable (rechargeable) batteries, these too must be removed before and, if necessary, in turn be disposed of according to the relevant regulations (see also the respective comments in this unit's instructions).

Further information about the subject is available at your community administration, your local waste collection company, or in the store where you purchased this equipment.



IMPORTANT SAFETY INFORMATION

IMPORTANT: PLEASE READ ALL INFORMATION FIRST

Like any scale, you control the accuracy of your RCBS Chagemaster Supreme. Before using the scale, read this instruction manual carefully to fully learn how to safely operate the scale.



WARNING! Failure to properly operate the scale can result in severe personal injury and/or equipment damage.

If you have read these instructions and still do not understand some operation, call us at 1-800-533-5000 and a technician will assist you. This instruction manual contains specific safety and operating information. It should be considered a permanent part of your reloading equipment and remain with the equipment at all times for easy reference.



SAFETY

Reloading is an enjoyable and rewarding hobby that can be conducted safely. However, as with any hobby, carelessness or negligence can make reloading hazardous. This product has been designed from the beginning with the user's safety in mind. When reloading, safety rules must be followed. By observing these rules, the chance of a hazardous occurrence causing personal injury or property damage is minimized.

RELOADING SAFETY

- Always wear safety glasses.
- Understand what you are doing and why. Read handbooks and manuals on reloading. Talk to experienced reloaders. Write or call suppliers of equipment or components if you have questions or are in doubt.
- Read and understand all warnings and instructions accompanying your equipment and components. If you do not have written instructions, request a copy from the manufacturer. Keep instructions for future reference.
- Do not rush or take short cuts. Establish a routine and follow it at a leisurely pace.
- Do not smoke while reloading, or reload near sources of heat, sparks or flame.
- Observe good housekeeping in the reloading area. Keep tools and components neat, clean and orderly. Promptly and completely clean up any spills.
- Keep your hands and fingers away from "danger" spots and pinch-points where they might be injured.
- Keep all reloading equipment and components out of reach of children.
- Keep all packing material out of reach of children.
- This device is not intended for use by individuals with restricted physical, sensory or mental capacities or those with a lack of experience and/or knowledge, including children, unless they are supervised by an individual who is responsible for their safety or have received training in operating the device.
- Stay alert. Reload only when you can give your undivided attention. Do not reload when tired, ill, rushed or under the influence of drugs or alcohol.

Because RCBS® has no control over the choice, assembly or use of components or other reloading equipment, RCBS assumes no liability, expressed or implied, for the use of ammunition reloaded with this product.

PRIMERS AND POWDER

- Store powder beyond the reach of children and away from heat, dampness, open flames and electrical equipment. Avoid areas where static electricity is evident.
- DO NOT have more than one can of powder on the bench at one time. Powder cans should be stored away from the bench to avoid picking up the wrong one.
- DO NOT use any powder unless its identity is positively known. The only positive identification is the manufacturer's label on the original canister. Discard all mixed powders and those of uncertain identity.
- DO NOT store powder in the unit after a reloading session. Over time the powder will damage the powder hopper.

LOADING DATA

- DO NOT SMOKE WHILE RELOADING
- OBSERVE ALL WARNINGS ABOUT THE USE OF MAXIMUM LISTED LOADS.
- Use only laboratory tested reloading data. We recommend the SPEER Reloading Manual.



WARNING

This digital scale is for use with smokeless powders only. Do not use with black powder (used in muzzle loading firearms). If black powder should come in contact with an electrical spark, an explosion may occur, resulting in serious injury or death.

RECORD KEEPING

- Keep complete records of reloads. Apply a descriptive label to each box showing the date produced, and the primer, powder and bullet used. Labels for this purpose are packed with SPEER bullets. Never attempt to guess at the identity of your ammunition.

NOTE: The scale was shipped in protective packaging. Save and use for transporting or long-term storage of the unit. See last page for address and Toll-free Customer Service phone number.

CALIBRATION

Calibration should be performed before every use. Prior to calibration, turn on scale and place PAN onto platen and allow scale to warm up for at least 15-20 minutes. The warm up process should be performed prior to every use if scale has been off for more than 30 minutes. Calibration is performed WITHOUT scale pan on the platen. To calibrate correctly, follow the CALIBRATION section of this instruction manual. A scale with improper calibration will cause an incorrect charge weight which may exceed the maximum recommended load.

Re-check calibration frequently during use using the calibration weights provided. If accuracy is found to be out of tolerance, the scale must be recalibrated.

PRECAUTIONS

Digital scales are very reliable devices. However, here are some events which may result in an inaccurate reading:

- Change in temperature. If the temperature changes more than a few degrees, you must re-calibrate the scale. Allow scale to stabilize for 20-30 minutes prior to use.
- Changes in scale location or a non-level working surface.
- Off center placement of weights on the platen.
- Movement of the scale during operation.
- Use only the two calibration weights supplied for accuracy.

- Weight accuracy is crucial. Keep weights clean and carefully stored. If dropped or damaged, have weights inspected against known standards. Contact RCBS Customer Service.
- Static electricity can cause the scale to “jump around”. If static build-up is evident, wipe scale with an anti-static sheet, or use anti-static spray. Spray on clean soft cloth first. Do not allow spray to get into mechanism.
- Take precautions from allowing powder or any other foreign debris from getting inside the load cell area. Ensure platen is always in place when powder is in reservoir. Make sure powder from reservoir and dispense tube has been emptied completely prior to removing tube for cleaning. If platen needs to be removed, to clean spilled powder, ensure tube is capped to prevent powder from falling out of tube into load cell area. If powder should get inside the unit, stop operation immediately and do not use scale until it has been serviced. Contact RCBS Customer Service.
- Do not press on the platform with your hand. You can damage the load cell.

GENERAL INFORMATION

The scale should be stored and used at normal room temperature. It should never be stored in cold or freezing temperatures, which can damage the load cell. If the scale has been sitting at a cool temperature, remove it from the carton and allow it to sit at room temperature for about 20 to 30 minutes before using.

Carefully unpack the scale. Look for and identify the following items:

- Scale with Platen
- AC Power Adaptor
- Two 50 gram weights
- Powder pan
- Wind Cover
- Brush
- Instruction Manual

The scale was shipped in protective packaging which should be saved and used for transporting the scale. This packaging is also recommended for long term storage of the unit.

POWER SUPPLY (ADAPTOR):

Input: 100VAC ~ 240VAC 50Hz / 60Hz

Output: 12VDC 1 A

Power Consumption: Max current 80 mA

SPECIFICATION:

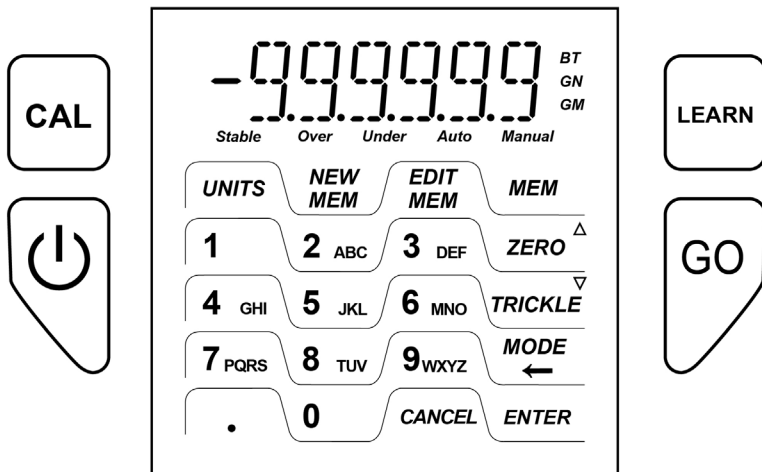
1500.0 grains / 0.1 grain

100.00 grams / 0.01 gram (1GM = 15.432 GN)

IMPORTANT:

Treat the scale as you would any fine instrument. ChargeMaster Supreme is physically very fragile and the load cell can be damaged by the following:

- Pushing down or dropping the scale.
- Pulling up on the platen in such a way that it binds in the load cell.
- A sudden, violent physical shock to the scale.



SCALE INDICATORS DESCRIPTION

Stable: indicates the weight is stable

Over: indicates the powder weight in the pan is higher than the set value

Under: indicates the powder weight in the pan is lower than the set value

Auto: indicates in automatic dispense mode


Manual: indicates in manual dispense mode

BT: Bluetooth connection indicator

GN: weight in grains

GM: weight in grams

FUNCTION KEY DESCRIPTION

 : Press **POWER** key to turn on the scale. When you turn the scale on the display will first show 999999 and will go through a quick count down and will then display to 0.0 GN (grain mode). “Stable” indicates when ready to use. When the scale is not in use the scale should be turned off and unplugged. To turn off scale, press and hold key for three seconds.

The display will read, “off 3-2-1” and power down.

GO: Press key to dispense the powder once you have entered a given charge. You can also press **GO** key to stop dispensing, pressing the **GO** key again will resume dispensing.

CAL: Key is used to calibrate the scale. You should calibrate your scale each time you begin a new reloading session. See the calibration section for full details.

LEARN: The **LEARN** process is one of the main features on the CM Supreme. **LEARN** process is used to help optimize the dispense process to dispense charges effectively and efficiently. To run **LEARN** process, press and hold the **LEARN** key for three seconds. The display will read, “**LEARN 3-2-1**” and start testing.

UNITS: Key switches scale from GN (grains) to GM (grams). The default is GN.

ZERO ↑: Key is used to re-zero the scale. For example, to weigh powder in a powder pan, you would first place an empty pan on the scale platen and press **ZERO** key to re-zero or Tare the scale. This will automatically subtract the weight of the pan from the scale. Also, while in **MEM** or **MODE** menu, it acts as an upward key to toggle through load data **MEMORY** or menu setting.

MODE ←: Key is used to enter menu settings for **AUTO**, (**AUTO/MANUAL** - dispense mode), **DISP (NORMAL/LEARN** - dispense mode), **WARN (ON/OFF** - Enable or disable drain warning), **BLE** (Bluetooth), **SOUND (ON/OFF** – Enable or disable all sound). While in **MODE** menu setting, use **ZERO** ↑ and **TRICKLE** ↓ key to scroll through menu items. Press **ENTER** key to select item, confirm and save; **CANCEL** key to **EXIT** without saving.

The **MODE** key also acts as a backspace button, in the **MEMORY** menu and will move the cursor to the left, when adding or editing a Cartridge **MEMORY**.

ENTER: Key is used to enter, confirm, and save while in **MODE** menu or while editing or entering a **MEMORY** setting.

CANCEL: Clear the data, when editing a **MEMORY** setting or stop the operation. If pressing **CANCEL** to stop dispensing, empty the pan and place onto platen. Press **GO** to start dispensing current target weight or enter a new target weight and press **GO** to dispense.

MEM: This recalls any saved **MEMORY** data. The **MEMORY** can be accessed by using the **ZERO** ↑ or **TRICKLE** ↓ to scroll through **MEMORY** by Cartridge, or by entering in **MEMORY** number, 1-50.

NEW MEM: Enters into **MEMORY** Menu allowing for the addition of a new **MEMORY**.

EDIT MEM: Enters into the **MEMORY** Menu and allows for the editing of existing **MEMORY**.

TRICKLE ↓: Hold to manually dispense powder. The trickle key is also used for for scrolling down through the **MODE** menu and **MEMORY** settings.

CALIBRATION

Always warm up the scale 15-20 minutes before calibration. Always calibrate your scale before use. This must be done **WITHOUT** the powder pan on the platform. To calibrate the scale, follow the steps below:

Step 1. Be sure the powder pan has been removed from the scale platen. When you turn the scale on, the display will show 999999 across the display for a few seconds and then counts down to display 0.0 GN (grains mode). Once “Stable” shows up, the scale is ready to proceed with calibrating. See Fig. 1

Step 2. Next press CAL key on the scale. The display will show C 0, with GM. See Fig. 2

Step 3. When the display shows C 0 and “Stable” is displayed, press the CAL key again.

Step 4. When the display shows **C 50**, place a 50 gram weight on the platen, when “Stable” is displayed, press the **CAL** key. See Fig. 3

Step 5. When the display shows **C 100**, add the second 50 gram weight to the platen, when “Stable” is displayed, press the **CAL** key. See Fig. 4



Fig. 1

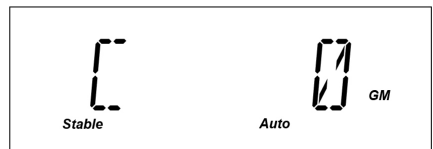


Fig. 2

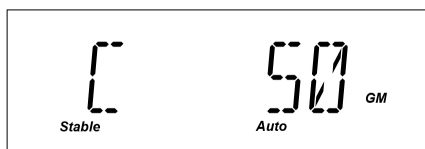


Fig. 3



Fig. 4

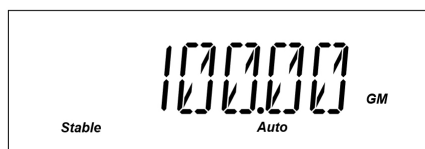


Fig. 5



Fig. 6

Step 6. The display will show **100.00 g**, See Fig. 5. Remove both weights from the platen, and replace them to their weight holders. The display will automatically switch back to 0.0 GN (grains).

Step 7. Next place the powder pan on the platen and press the **ZERO** key to zero the weight of the pan and tare the scale. The display will show 0.0 GN and is now calibrated and ready to operate. See Fig. 6

Notice: In the calibration process, when it shows ERROR, it is probably caused by the incorrect weight. Use only the calibration weights provided.

MANUAL DISPENSING MODE:

Press **MODE** and use **ZERO** ↑ and **TRICKLE** ↓ key to select **AUTO**. Press **ENTER** key to enter. Then use **ZERO** ↑ and **TRICKLE** ↓ keys to select "OFF" and press **ENTER** key to save the setting. The display will show "Manual".

Step 1. Make sure Scale Pan is placed on platen and scale is zeroed. Use the number keys to key in the desired weight. Press **GO** key to start the dispensing process. The decimal point must be used to enter charges using tenth grain increments. (e.g., 45.5) Use **CANCEL** key to clear the value and stop the dispensing process. Empty pan and place onto platen, a new charge weight can now be entered. To discard the current charge weight, press **ZERO** key to return to scale mode.

Note: the valid values: 1.0 – 999.9, and 1000-1500 (Dispensing range is 1.0 to approximately 350.0 GN, which is dependent upon powder type and pan volume.)

Step 2. After the dispenser has finished dispensing the charge, remove pan, empty pan, and place back onto platen. When "Stable" is displayed, press **GO** key again to dispense the same weight. Continue this process if you do not want to change the charge weight.

Step 3. If you need to change the weight, key in the new weight as in Step #1 and press the **GO** key.

Step 4. If you are dispensing powder and wish to exit dispensing mode, press **CANCEL** key.

Step 5. To change the dispensed weight value in dispensing mode, the **TRICKLE** key may be used to fine-tune the exact value. For example, 10.0GN is the first dispensing weight, press **GO** key to start the dispensing process. After the dispensing process, press **TRICKLE** key to keep dispensing to 12.5GN. When scale pan is emptied and placed back on the platen, the unit will revert back to dispensing 10.0GN.

MANUALLY DISPENSING OPERATION WITH TRICKLE KEY:

Press **TRICKLE** key to dispense the powder slowly. Release **TRICKLE** key to stop dispensing.

AUTOMATIC DISPENSE MODE:

The Automatic Dispense mode allows powder charges to automatically dispense from the unit once an empty scale pan is placed onto the unit.

Step 1. Press **MODE** and use **ZERO** ↑ and **TRICKLE** ↓ keys to select **AUTO** press **ENTER** key to enter. Then use **ZERO** ↑ and **TRICKLE** ↓ keys to select "ON" and press **ENTER** key to save the setting. The display will show "Auto"

Step 2. Enter the desired charge weight and press **GO** key to dispense the first charge.

Step 3. Remove the scale pan, empty the powder, and return the empty scale pan to the scale platen. When the display shows "0.0" the dispenser will automatically dispense the charge. Press **CANCEL** to stop dispensing, empty pan and place onto platen. Then press **GO** to auto dispense current target weight or enter new target weight and press **GO** to auto dispense.

To Return to **MANUAL** operating mode: Press **MODE**, use **ZERO** ↑ and **TRICKLE** ↓ keys to scroll through menu. Select **AUTO** and press **ENTER** key. Use **ZERO** ↑ and **TRICKLE** ↓ keys to select "OFF" and press **ENTER** key to save the setting. The display shows "MANUAL".

LEARN DISPENSE MODE

The **LEARN** dispense mode is one of the main features on the CM Supreme. The **LEARN** process is used to optimize dispensing and aids in dispensing charges effectively and efficiently. Press **CANCEL** anytime to interrupt or stop **LEARN** Process.

Step 1. Pour powder into the Powder Reservoir. Make sure the powder pan is empty, placed on platen, and scale is zeroed. Press and hold **LEARN** button for 3 seconds; scale will display, "LEARN 3-2-1" and "TEST 1". The **LEARN** process will begin and the dispenser will begin dispensing powder.

Step 2. When scale displays "EMPTY" empty pan, place pan back onto platen and press **ENTER**.

Step 3. Scale will display "TEST 2" and start dispensing powder, when the scale displays "EMPTY" empty pan, place back onto platen and press **ENTER**.

Step 4. Scale will display "TEST 3" and start dispensing powder, wait until the scale displays "EMPTY" empty pan, place back onto platen, press **ENTER**. The scale will display "END" and return to 0.0. The learn process is complete, and set to dispense in **LEARN** mode (**DISP=LEARN** in **MODE** setting).

Enter the desired charge and press **GO** key to dispense as described in **AUTO** and **MANUAL** dispensing. If dispensing takes too long; as powder or conditions may have changed, run the **LEARN** process again to optimize dispensing for the current condition.

*NOTE: If a **LEARN** is run it will remain as the default **LEARN** in the device until a new **LEARN** is run. Whenever switching to a different powder, the **LEARN** process will be required to be ran again, if not, the results may not be optimal. Run a new **LEARN** process whenever changing to a different powder. Whenever a new **LEARN** process is run, it will become the default **LEARN**. If user chooses to save a **LEARN** process, it can be saved to one of the fifty **MEMORY** slots, by pressing the **MEM** key and creating a new **MEMORY**.*

NORMAL DISPENSE MODE

Normal dispense mode is not optimized for various powder types. **NORMAL** dispensing will dispense all powder types; however, the dispense times will be considerably longer than they would if using the **LEARN** dispense mode.

CHECK CURRENT DISPENSING MODE

Press and hold **MODE** button for 2 seconds. The display will show the current dispensing mode as one of the following: "LEARN", "NORMAL", or "MEM". "MEM" indicates the device is dispensing from one of the **MEMORY** settings and could be set to a dispense mode of either **NORMAL** or **LEARN**.

MODE SETTING

Press **MODE** to enter **MODE** settings. Use **ZERO** ↑ and **TRICKLE** ↓ keys to scroll through menu: **AUTO** -> **SOUND** -> **BLE** -> **WARN**->**DISP**. Use ENTER to enter or save setting and use **CANCEL** key to exit and return to weighing.

| Menu | Setting Value | Description |
|-------|---------------------------------------|--|
| AUTO | on*/off | Auto dispense |
| SOUND | on*/off | Buzzer sound |
| BLE | see Bluetooth Setting for more detail | |
| | Name | Composed of 5 alphanumeric characters (0-9, A-Z) |
| | AB | Set Bluetooth parameters AB, default AB = 00 |
| WARN | on*/off | Open Drain warning |
| DISP | LEARN/NORMAL | LEARN: dispense in LEARN mode NORMAL: dispense in NORMAL mode |

* = default setting

*NOTE: If **DISP=LEARN** is selected, but there is no **LEARN** data, "**NOLRN**" **ERROR** appears and sets to **NORMAL** and return to weighing mode. A **LEARN** process must be run in order for **LEARN** to be selected.*

BLUETOOTH DOWNLOAD/CONNECT TO RCBS APP (optional)

1. Download the RCBS App from the App Store (Apple® devices) or Google Play (Android™ devices).
2. Turn on Bluetooth on your mobile device. (See Fig. A)
 - a. On Android you will need to enable Location Services in the Settings App for RCBS, Bluetooth also requires this permission.
 - b. On iOS you will need to allow the app permission to use Bluetooth when requested.
3. Sign up by selecting a Username and Password and entering the other requested information. (See Fig. B)
4. Register your device by naming it (any name will be sufficient). Your serial number will be auto populated in the registration form.
5. After registration you will automatically be connected to your new device. After the initial connection you can connect to your Device from Profile->Device Management or by clicking the drop down on the Navigation Bar in the top center of the screen. (See Fig. C)
6. If you are properly connected, you will see a blue icon on the top of the screen. If you need to update or adjust your connected device, tapping this icon will take you to the Device Management screen.
7. The bottom tab bar of the application will allow you to navigate to Calibrate, access the Load Log, Dispense and update your user profile. (See Fig. D)

Fig. A

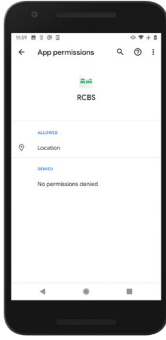
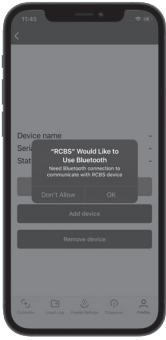


Fig. B

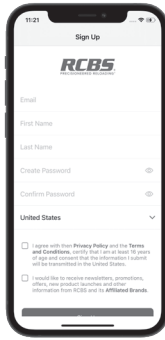
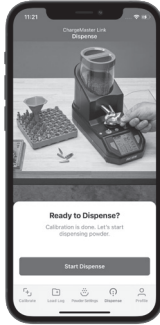


Fig. C



Fig. D



*iPhone® is a registered trademark of Apple Inc.
 Android™ is a trademark of Google Inc.*

BLUETOOTH SETTING

Press **MODE** key and Use **ZERO** ↑ and **TRICKLE** ↓ keys to choose “BLE”. Press **ENTER** to enter setting.

1. “NAME”: Bluetooth name is composed of 5 alphanumeric characters (0~9, A~Z). Press **ENTER** to save.
2. “AB”: Bluetooth parameters and default = 00
 - A: pair/unpair setting
 - 0 = unpair mode
 - 1 = pair mode
 - B: link password setting
 - 0 = link password disable
 - 1 = link password enable
3. Press **ENTER** to save.

To check Bluetooth's firmware version, while display shows “BLE”, press **MODE** key instead of **ENTER** key, “AHPZZ” shows on the display, where ZZ is the version number.

Set Bluetooth Link Password

Press **MODE** key and use **ZERO** ↑ and **TRICKLE** ↓ keys to choose “BLE”. Then press **CAL** key instead of **ENTER** key, the display shows “PW”. Enter the new password and press **ENTER** key to save. Default password is 00000.

OPEN DRAIN WARNING

If the drain spout is open and Chargemaster Supreme is powered on, “DRAIN” appears and flashes on the display. Buzzer will also sound if **SOUND** is set to “ON”. To disable Open Drain Warning, set **WARN** to “OFF” in **MODE** setting.

*Note: If Open Drain Warning is still activated even if drain is closed, press and hold **POWER** for 3 seconds to turn off the scale. When scale powered back on, enter **MODE** setting and ensure **WARN** is set to “OFF”, this will bypass the Open Drain Warning and allow for use of scale.*

QUICK DRAIN FEATURE:

To drain the remaining powder from your dispenser:

- Step 1.** Place a tray under the drain spout on the right-hand side of your dispenser (Fig. 7).
- Step 2.** Turn the drain spout ½ turn to open the spout (Fig. 8). You may need to tap on the top of the dispenser to start the powder to drain.
- Step 3.** To drain the powder in your dispenser tube, push the **TRICKLE** ↓ button and the powder will dispense into the powder pan. Pressing Cancel, closing drain spout or lifting pan will stop tube rotation.
- Step 4.** Use the small brush provided to clean all the powder from the reservoir.
- Step 5.** When finished, be sure to close the drain spout.
- Step 6.** Ensure all powder is removed from reservoir and dispense tube. Canned or compressed air can be used to clear out all powder. If using compressed air hold nozzle at least 12” from dispenser and only blow air into powder reservoir area. DO NOT blow compressed air directly on display.



Fig. 7 - Drain spout on right side of dispenser

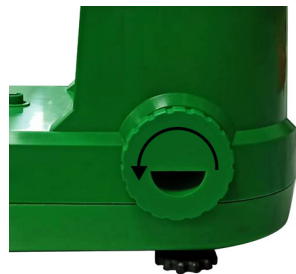


Fig. 8 - Turn drain spout 1/2 turn to open spout

CONFIGURE NEW MEMORY

(50 memory slots are available, MEM 001~MEM 050)

- Step 1.** Press **NEW MEM** key to start the process
- Step 2.** If no current **MEMORY** exists; MEM001 shows on the display. Otherwise, the next available memory slot will display, i.e., MEM002, etc.

Step 3. Press **ENTER**, the display will flash "CART" and display "=_ ". Key in the cartridge title by one letter at a time. To select a letter, slowly press the numerical keys until the desired letter appears.

Example: To key in a letter "B", slowly press the number "2" three consecutive times.

After you select the appropriate number/letter, you will need to wait until the keys stop flashing to proceed to the next number/letter. There are 5 spaces available to enter the cartridge name. When you've completed the cartridge title, press **ENTER** for the next field.

Step 4. The display will flash "B_WT", then display "B 0.0". Key in your bullet weight and press **ENTER** to advance to the next field.

Step 5. The display will flash "POWD" and display "=_ " Key in the powder name. Refer to example in Step 3 for entering letters. Allow the letter/number to stop blinking before you proceed to the next letter/number. You have 5 spaces to enter your powder name. When you have your powder name on the display, press **ENTER** for the next field.

Step 6. "WT" will flash and then "W 0.0" will display. Key in the desired powder charge and press **ENTER** for the next field.

Step 7. "DISP" will flash and then the display will show "NORMAL". Use **MODE** key to toggle between "NORMAL" and "LEARN". and press **ENTER** to save and end configure **NEW MEMORY**. The Scale will Display the number of the memory that has been saved; NO 001-50. Press **GO** to start dispensing the saved memory or press **ENTER** and the scale will flash through all the parameters of the saved memory and stop at NO 001-50.

*Note: When editing **MEMORY** fields, pressing **CANCEL** key will clear the content of the field. The **MODE**← key can be used to move the cursor to the left. Press **ZERO**↑ key to go back to previous field or press **TRICKLE**↓ key to advance to the next field. When editing a field if **CANCEL** is pressed the one the content of the field will be erased. If **CANCEL** is pressed a second time, the device will exit out of the **MEMORY** mode without making any changes.*

RECALL MEMORY WITH ZERO↑ AND TRICKLE↓ KEYS

Step 1. Press **MEM** key, the display will show "=_ "

Step 2. Use the **ZERO**↑ key and **TRICKLE**↓ keys to scroll through the **MEMORY** slots by Cartridge Name.

Step 3. To select a desired **MEMORY**, press **ENTER**

Step 4. The display will flash through all parameters of **MEMORY**. NO 001 will display if in MEM001.

Step 5. Make sure that the data stored is accurate. Press the **GO** key to dispense the powder.

*Note: "NO MEM" will display if there is no **MEMORY**.*

RECALL MEMORY WITH CARTRIDGE TITLE

Step 1. Press **MEM** key, the display will show "=_ "

Step 2. Key in the cartridge title. (e.g., 7 Mag) and press **ENTER**. If cartridge title is not available, "NO MEM" will display. If this occurs use **ZERO**↑ key and **TRICKLE**↓ keys to scroll through the stored cartridges.

Step 3. Press **ENTER**. The display will flash through all parameters of the **MEMORY**. NO 001 will display if in MEM001.

RECALL MEMORY WITH CARTRIDGE TITLE, cont.

Step 4. Make sure that the data stored is accurate. Press the **GO** key to dispense the powder.

Note: If the cartridge names are repeated, this function will automatically recall the cartridge name that is first in the memory.

RECALL MEMORY WITH MEMORY NUMBER

Step 1. Press **MEM** key, and display will show “=_ _ _”

Step 2. Press **MEM** key again and display MEM _ _ _ _.

Step 3. Key in the memory number required (e.g. 001 for MEM 001) or press **ZERO**↑ key and **TRICKLE**↓ Keys to scroll through and find desired memory.

Step 4. To select **MEMORY.**, press **ENTER** key. The display will flash through all parameters of the **MEMORY.** NO 001 will display if in MEM001.

Step 5. Make sure that the data stored is accurate, and press the **GO** key to dispense the powder.

*Note: “EORROR” means the entered **MEMORY** is not within MEM 001-050*

EDIT MEMORY

Step 1. Press **MEM** key and use any one of the three previously mentioned RECALL MEMORY options. Select the desired memory slot that needs to be edited.

- Recall **MEMORY.** with **ZERO**↑ and **TRICKLE**↓ keys
- Recall **MEMORY.** with cartridge title
- Recall **MEMORY.** with memory number

Step 2. Press the **EDIT MEM** key to edit the data.

Step 3. Pressing the **ZERO**↑ and **TRICKLE**↓ keys will allow scrolling through each of the **MEMORY** parameters. (Cartridge title -> Bullet weight -> Powder name->Charge Weight->DISP)

Step 4. To edit the parameter, use **MODE**← key to move cursor leftward to the digit that you wish to change, or press **CANCEL** key to clear the contents of the entire field. To change dispense parameter use Mode<- key to toggle between Normal and Learn dispense. Once parameter is edited press **ENTER.** SAVED will display. Scale will display new parameter. press **ENTER** again, “NO 001”if in MEM001, will display. Press **GO** to start dispensing or Press **ENTER** again for display to flash through all the parameters of edited **MEMORY.** “NO 001” will display. Press **GO** to start dispensing.

*NOTE: If at any time user wishes to Cancel out of Edit Memory, simply press **CANCEL** button twice, first time it will clear parameter, second time it will exit out of EDIT MEMORY without making any changes to existing **MEMORY.** If in dispense parameter, pressing Cancel once will exit out of edit memory without making any changes.*

*Example: If saved WT is 54.0 gns and the desire is to edit to 54.2 gns, use **ZERO**↑ and **TRICKLE**↓ keys until WT parameter is shown then use **MODE**← key to toggle the flashing cursor over to the 0 position of 54.0. Then press the number “2” on the keyboard. The scale will now display 54.2. or, when WT parameter is displayed press **CANCEL** to clear field then type “54.2”.*

DELETE MEMORY

Step 1. Press **MEM** key, and use any of the three MEMORY Recall methods listed previously to select desired **MEMORY** to be deleted.

Step 2. Press and hold the **CANCEL** key. "-----" will flash on display. **MEMORY** has been deleted.

Step 3. The display will show the next saved **MEMORY** or **NO MEM** if no **MEMORY** exists.

CLEAN TUBE SEALS

Occasionally powder will accumulate in tube seals, especially if fine Ball type powder is used. It is recommended to remove dispense tube and clean seals after or before each reloading session. Turn dispense tube counterclockwise to remove dispense tube. Remove seal covers by simply sliding up out of reservoir. Check seals for powder accumulation and clean if necessary. Remove rubber seal from plastic cover and remove any powder. Rub seals slightly with finger to ensure seals return to circular shape before placing seals back to cover. Insert seal covers back gently.



Install tube back by turning the tube clockwise. Then check each tube for any gap between seals and the tube by moving the tube forward and backward. If seals move with tube, the tube and seals are installed correctly. Otherwise, remove the tube and seals and ensure the seal is installed correctly in cover, i.e., seal not wrinkled or folded over, by rubbing with finger. Reinstall and check again for gap between seals and tube.

CHECK FIRMWARE VERSION:

Power scale on, while the scale is counting down press the **UNIT** key to display firmware, "XXXXX" will display. To check main board's firmware, press **ZERO** key and it will show "1XX". The main board's firmware version is 020341XX, where XX is the mainboard's version number. To check touch board's firmware, press [.] key and it will show "XXXX5" and 5 sec afterward display "5YY". The touch board's firmware version is 170055YY, where YY is the touch's version number.

To check Bluetooth board's firmware, when in weighing mode, press **MODE** key and use **ZERO**↑ and **TRICKLE**↓ keys to choose "BLE". Then press **MODE** key and it will show Bluetooth's firmware is "AHPZZ", where ZZ is the Bluetooth's version number.

ONE YEAR LIMITED WARRANTY

Your Chargemaster Supreme Powder Scale/Dispenser is warranted to be free from defects in material or workmanship for one year from the date of purchase. This warranty is extended only to the original consumer purchaser. All RCBS products are intended for non-commercial use by hobbyists. Any other use of these products will void the warranty. Should you believe that your Chargemaster Supreme Powder Scale/Dispenser is defective in material or workmanship, you must return it to RCBS, postage paid for evaluation. If defective, the product will be repaired or replaced at RCBS' option, at no charge.

Send a dated proof of purchase to RCBS for return shipping and handling, along with the Chargemaster Supreme Powder Scale/Dispenser to:

RCBS
605 Oro Dam Blvd East
Oroville, California 95965

Warranty services cannot be provided without meeting the above requirements.

THIS ONE YEAR LIMITED WARRANTY DOES NOT COVER DEFECTS OR DAMAGE RESULTING FROM: CARELESSNESS, MISUSE, COMMERCIAL USE, ABUSE, IMPROPER INSTALLATION, MODIFICATION, OR NORMAL WEAR AND TEAR. THE IMPLIED WARRANTIES OF MERCHANTABILITY AND FITNESS FOR A PARTICULAR PURPOSE ARE LIMITED TO THE DURATION OF THIS ONE YEAR LIMITED WARRANTY. RCBS IS NOT LIABLE FOR DAMAGES IN EXCESS OF THE PURCHASE PRICE OF THE PRODUCT AND UNDER NO CIRCUMSTANCES SHALL RCBS BE LIABLE FOR CONSEQUENTIAL OR INCIDENTAL DAMAGES. HOWEVER, SOME STATES DO NOT ALLOW LIMITATIONS ON INCIDENTAL, OR CONSEQUENTIAL DAMAGES, SO THE ABOVE LIMITATION OR EXCLUSION MAY NOT APPLY TO YOU.

The above warranty provides the sole and exclusive warranty available to the customer in the event of a defect in material or workmanship in the reloading product. This warranty gives you specific legal rights, and you may also have other rights which vary from State to State.

CONTACT US:

RCBS
605 Oro Dam Blvd East
Oroville, California, 95965
1-800-533-5000 (US or Canada)
E-mail: rcbs.tech@vistaoutdoor.com
Website: www.rcbs.com

The logo for RCBS, featuring the letters "RCBS" in a bold, italicized, sans-serif font. A registered trademark symbol (®) is located at the bottom right of the letters.

PRECISIONEERED RELOADING EQUIPMENT

We think we make the world's best reloading equipment. If you agree, please tell your friends. If you disagree, tell us—we want to do something about it!

RCBS® is a registered trademark of Vista Outdoor Inc.